

Item 1

**Land at Fulbeck Avenue,
Worthing
AWDM/0166/20**

Application under Regulation 4 for full planning permission for:

The erection of 152 apartments including 30% affordable provision, consisting of 51 no. 1-bedroom apartments and 101 no. 2-bedroom apartments with associated car and cycle parking, open space, landscaping and new access at land to the west of Fulbeck Avenue.



West Worthing Tennis & Squash Club

Northbrook Farm Caravan and Motorhome Club Site

Application Site

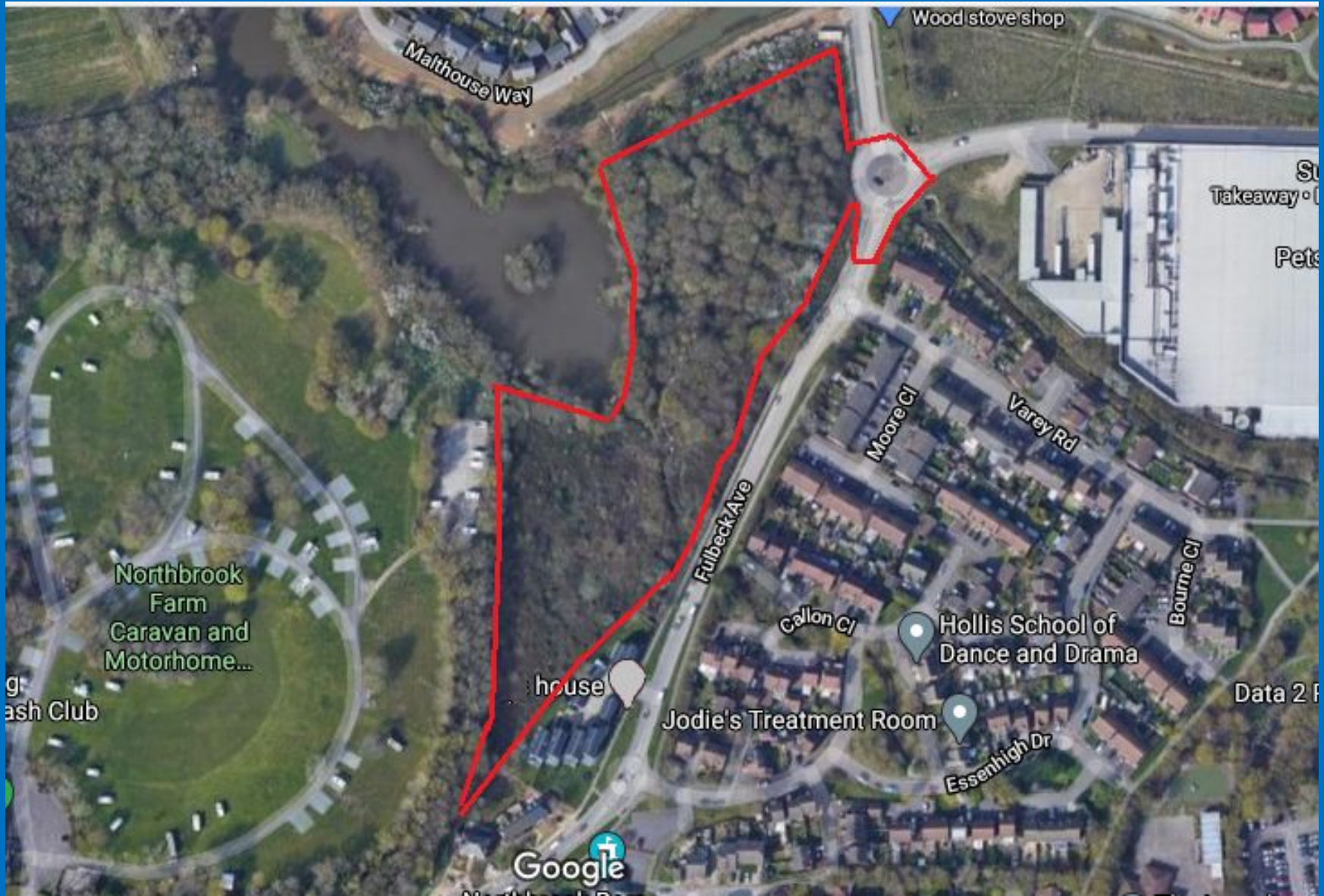
TESCO Extra

Columbia House

Seven Telematics

TESCO Extra Petrol Station

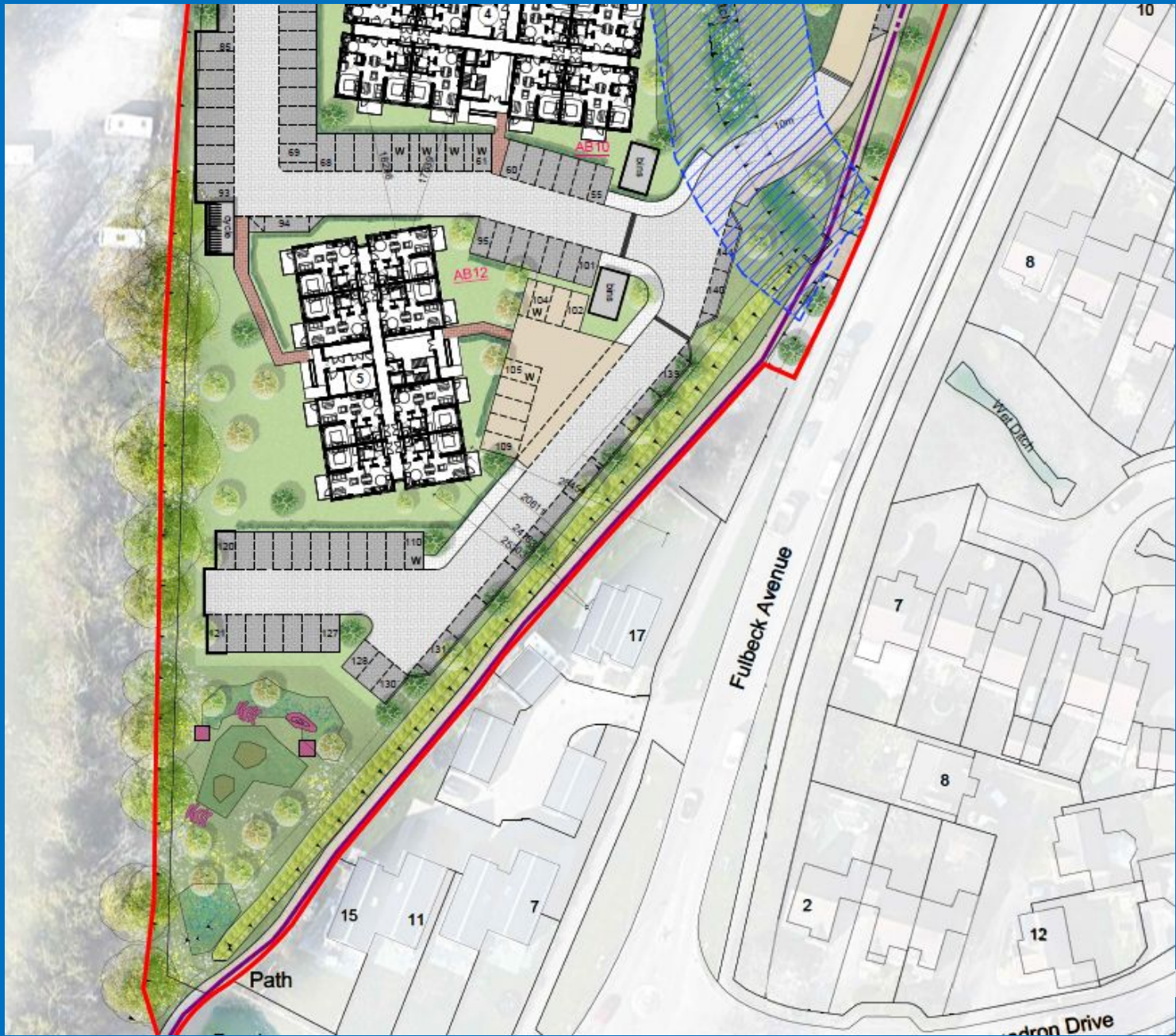












ROUGH

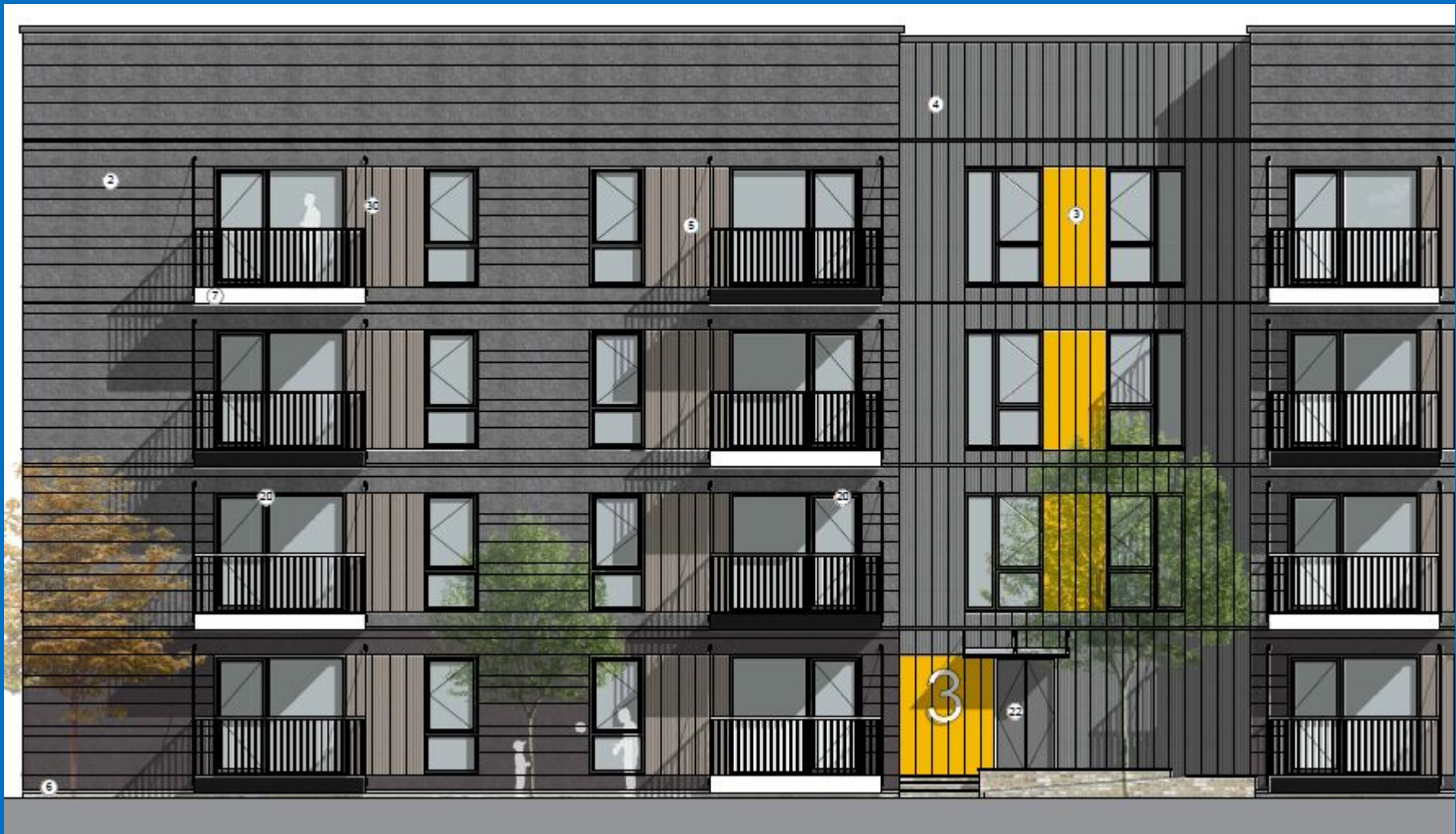


st Elevation



North Elevation - Secondary Elevation









View from Fulbeck Avenue looking west towards blocks 1,2 and 3

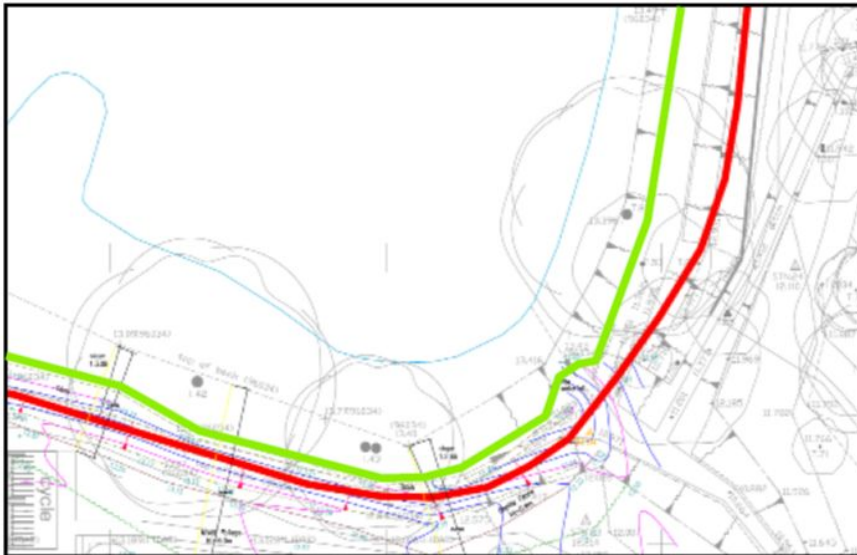
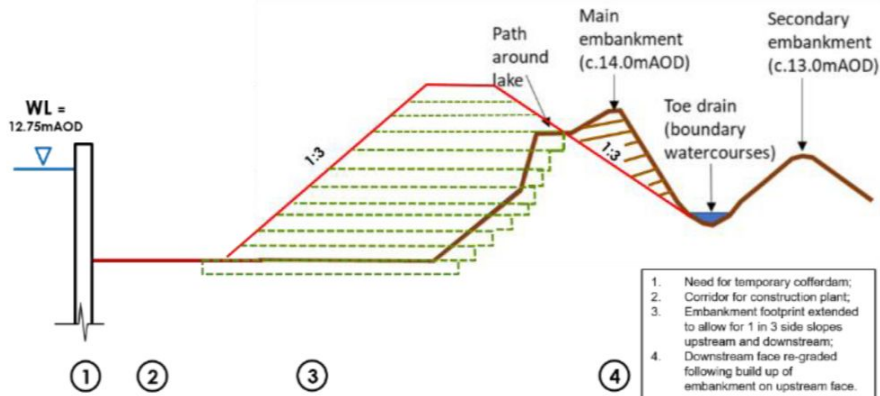


View from site entrance looking west towards blocks 2 and 3



Precedent image





Ref: Northern Sheet Piles Ltd
(work in progress)

North East Frontage



Fulbeck Ave - south of roundabout



Central area facing north



Central area - facing south-west



Fulbeck Avenue - further south



Fulbeck Ave – neighbour to south



Central interior



Central interior



Site Frontage and Tesco delivery area



Church Site



Site from Cornfield Way



Attenuation pond & northern edge



Last Slide